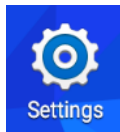
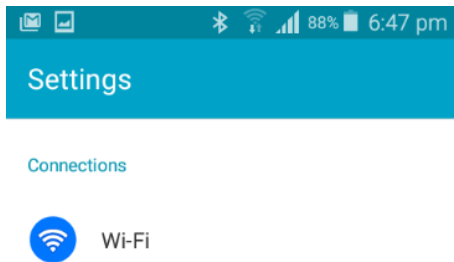


How to connect to OpenCampus on Android

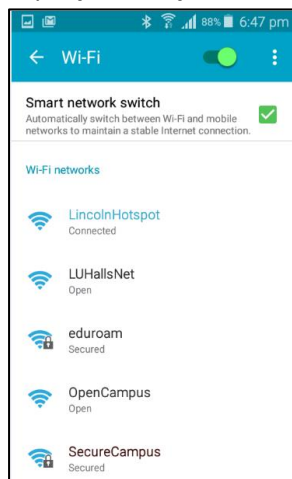
1. Settings



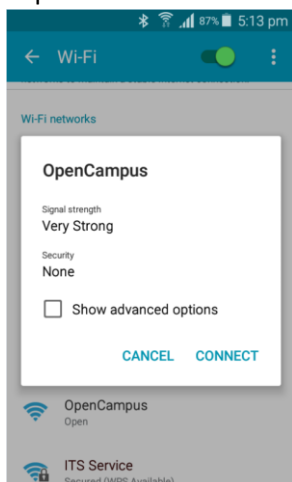
2. Wi-Fi



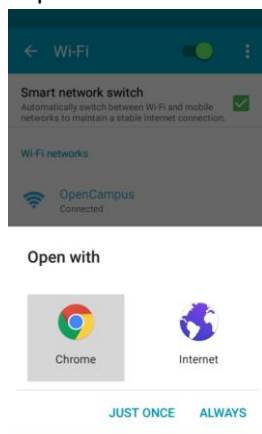
3. Tap OpenCampus



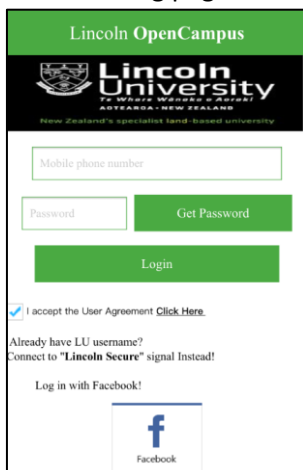
4. Tap Connect



5. Tap Chrome



6. The following page should appear:

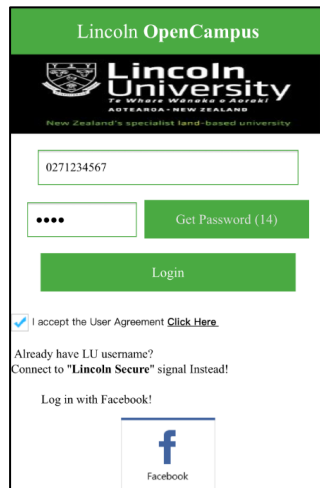


There are two way to Authenticate:

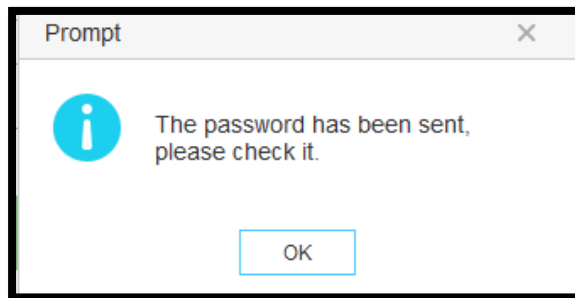
- a. [SMS](#)
- b. [Facebook](#)

a. To Authenticate using SMS

Put your mobile phone number and click “Get Password”



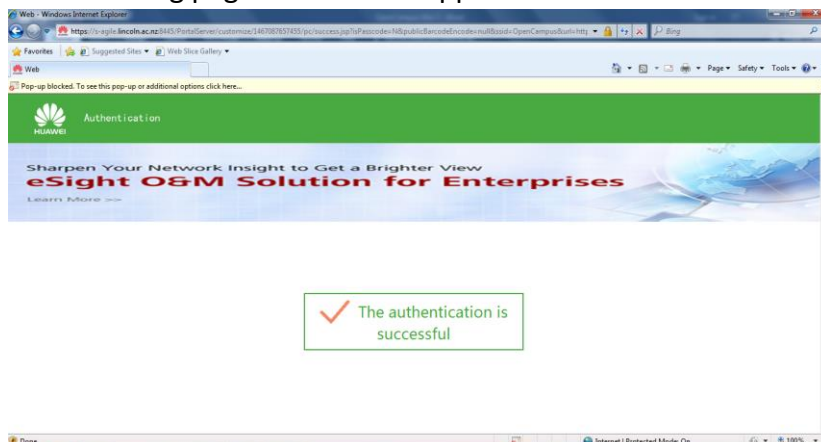
Click ok



A text should arrive on your mobile phone with the password put this in and click on “Log in”.

Note that there is a timer running and that the password needs to be entered within 60 seconds.

The following page should then appear:



b. To Authenticate using Facebook

Click on the Facebook Link:



A webpage should open where you put your Facebook login details, and then click on Log In.



The following page should then appear:

