

How to connect to OpenCampus on Mac Users (iMac, MacBook Air, MacBook Pro etc.)

1. Connect to **OpenCampus** under Wi-Fi connections



2. The following page should appear.

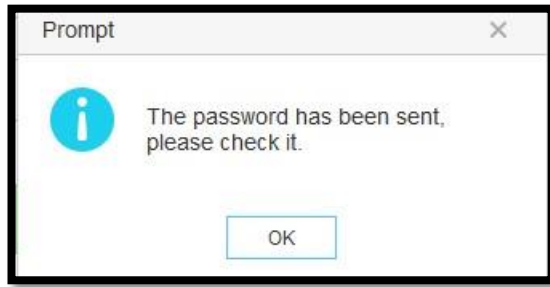
A screenshot of the LU OpenCampus login page. The page has a white background with a dark blue header. The main content area contains a login form with the following elements: a title 'Log in to LU OpenCampus', a text input field for 'Mobile phone number', a text input field for 'Password', a green button labeled 'Get SMS verification code', and a green button labeled 'Log In'. To the right of the form, there is a 'Login with ...' section with a Facebook logo and the text 'Facebook'. Below the form, there is a checkbox for 'I accept the User Agreement' with a link 'Click Here', and a link 'Already got LU credentials?'. At the bottom of the page, there is a dark blue banner with the Lincoln University logo and the text 'Lincoln University Te Whare Wānaka o Aoraki AOTEAROA - NEW ZEALAND New Zealand's specialist land-based university'.

To Authenticate using SMS

1. Put your mobile phone number and click "Get SMS Verification code" A text should arrive on your mobile phone with the password put this in and click on "Log in".

A close-up screenshot of the login form. It shows the 'Mobile phone number' input field, the 'Password' input field, the 'Get SMS verification code' button, and the 'Log In' button.

2. Click OK



3. A text should arrive on your mobile phone with the password put this in and click on "Log in".

Note that there is a timer running and that the password needs to be entered within 60 seconds.

The following page should then appear:

