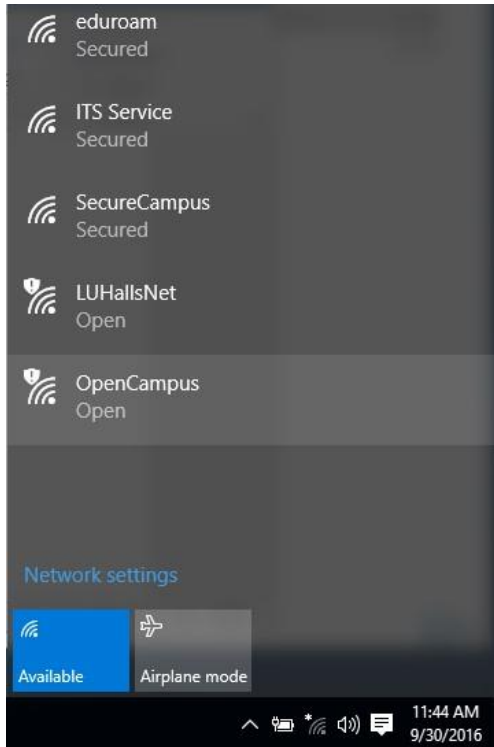


## HOW TO CONNECT TO OPENCAMPUS USING WIN 10 OS

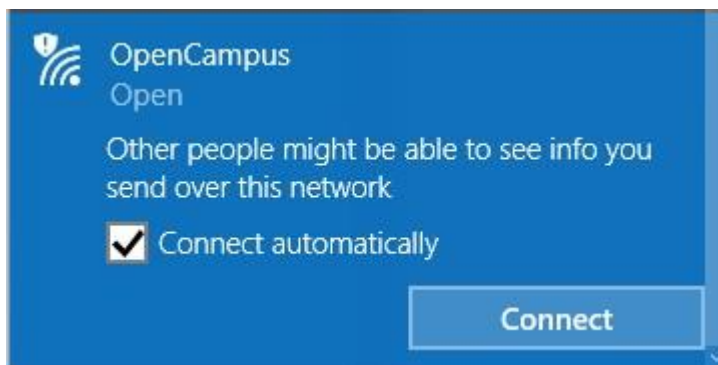
1. Click the Wi-Fi icon on the Taskbar (bottom right-hand corner of your screen).



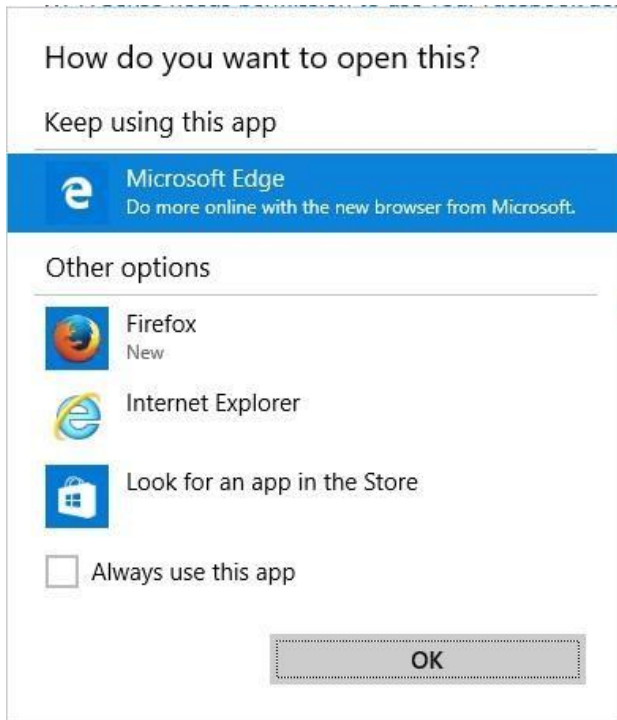
2. Select the OpenCampus network and click on Connect.



3. Click on Connect.



4. The following window may appear. Choose what web browser you would like to use, and click OK.  
If this window does not appear, open any web browser.



5. When the web browser opens the following page should appear:

### ***To Authenticate using SMS***

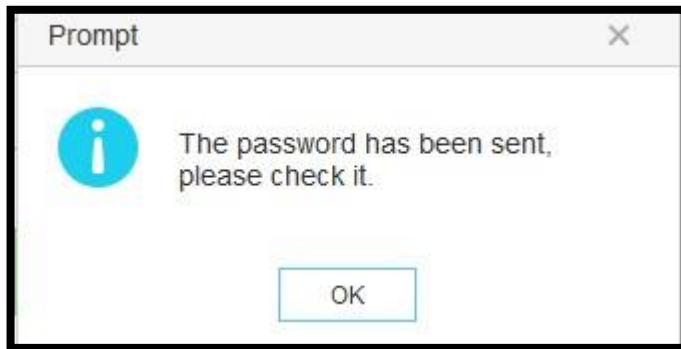
1. Put your mobile phone number and click "Get SMS Verification code" A text should arrive on your mobile phone with the password put this in and click on "Log in".

Mobile phone number

Password  [Get SMS verification code](#)

[Log In](#)

2. Click OK



3. The following page should then appear:

