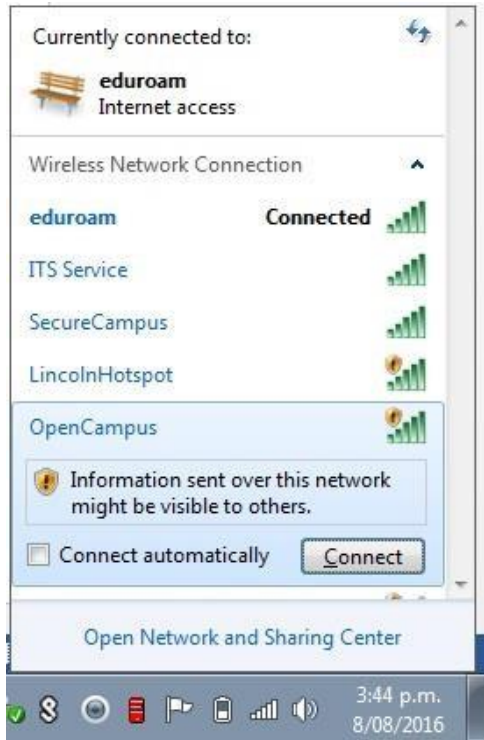


HOW TO CONNECT TO OPENCAMPUS USING WIN 7 OS

1. Click the Wi-Fi icon on the Taskbar (bottom right-hand corner of your screen).



2. Select the OpenCampus network and click on Connect.



3. Open a web browser. The following page should appear.

A screenshot of the LU OpenCampus login page. The page has a white background with a dark blue footer. The main content area contains a login form with the following elements:

- A heading: 'Log in to LU OpenCampus'
- A text input field for 'Mobile phone number'.
- A text input field for 'Password'.
- A green button labeled 'Get SMS verification code'.
- A large green button labeled 'Log In'.
- A checkbox with the text 'I accept the User Agreement' and a link 'Click Here'.
- Text: 'Already got LU credentials??' and 'Connect to SecureCampus signal instead.'

On the right side of the page, there is a 'Login with ...' section with a Facebook logo and the text 'Facebook'. The footer contains the Lincoln University logo and the text: 'Lincoln University', 'Te Whare Wanaka o Aotaki', 'AOTEAROA - NEW ZEALAND', and 'New Zealand's specialist land-based university'.

To Authenticate using SMS

1. Put your mobile phone number and click "Get SMS Verification code" A text should arrive on your mobile phone with the password put this in and click on "Log in".



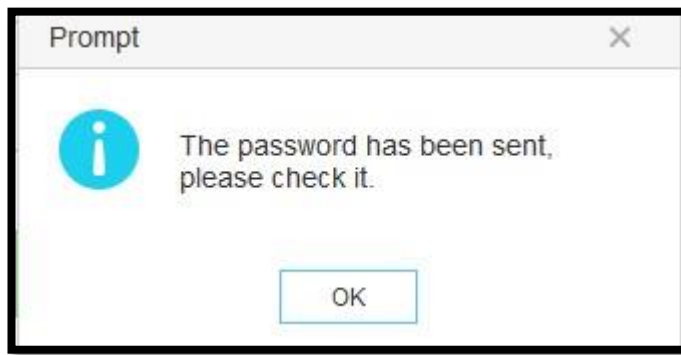
Mobile phone number

Password

Get SMS verification code

Log In

2. Click OK



3. The following page should then appear:

