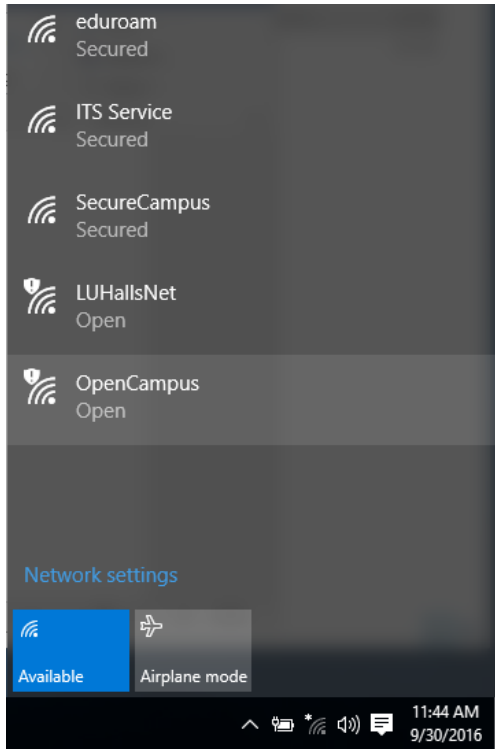


## HOW TO CONNECT TO OPENCAMPUS USING WIN 10 OS

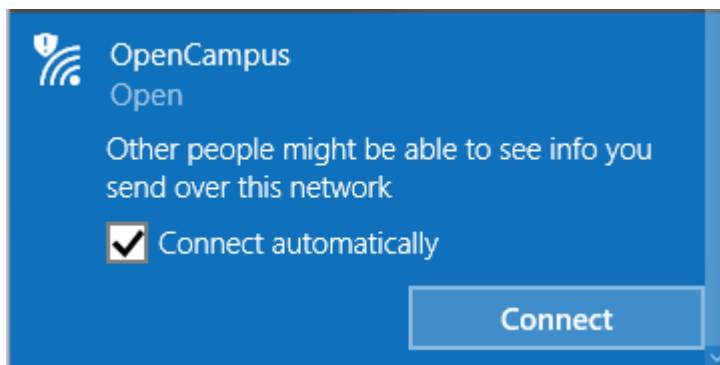
1. Click the Wi-Fi icon on the Taskbar (bottom right-hand corner of your screen).



2. Select the OpenCampus network and click on Connect.

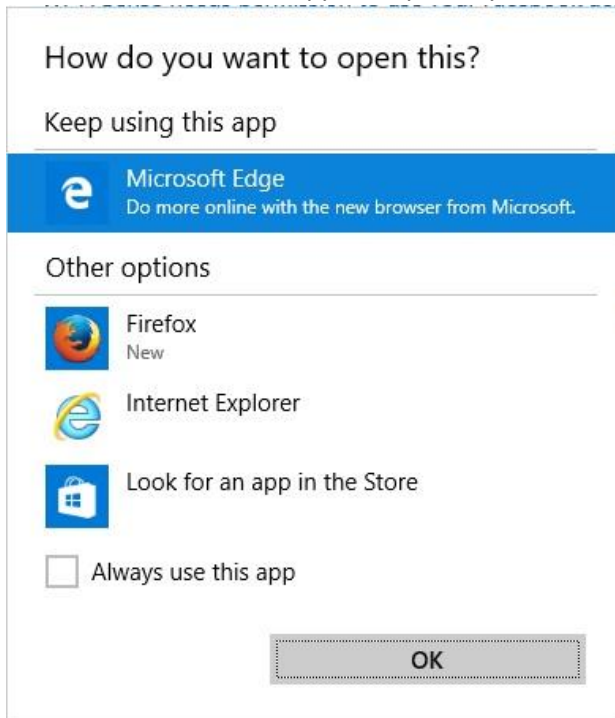


3. Click on Connect.



4. The following window may appear. Choose what web browser you would like to use, and click OK.

If this window does not appear, open any web browser.



5. When the web browser opens the following page should appear:



**a. To Authenticate using SMS**

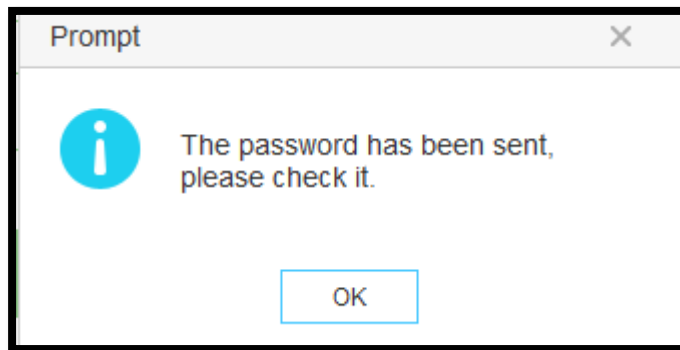
Put your mobile phone number and click “Get SMS Verification code”

A text should arrive on your mobile phone with the password put this in and click on “Log in”.

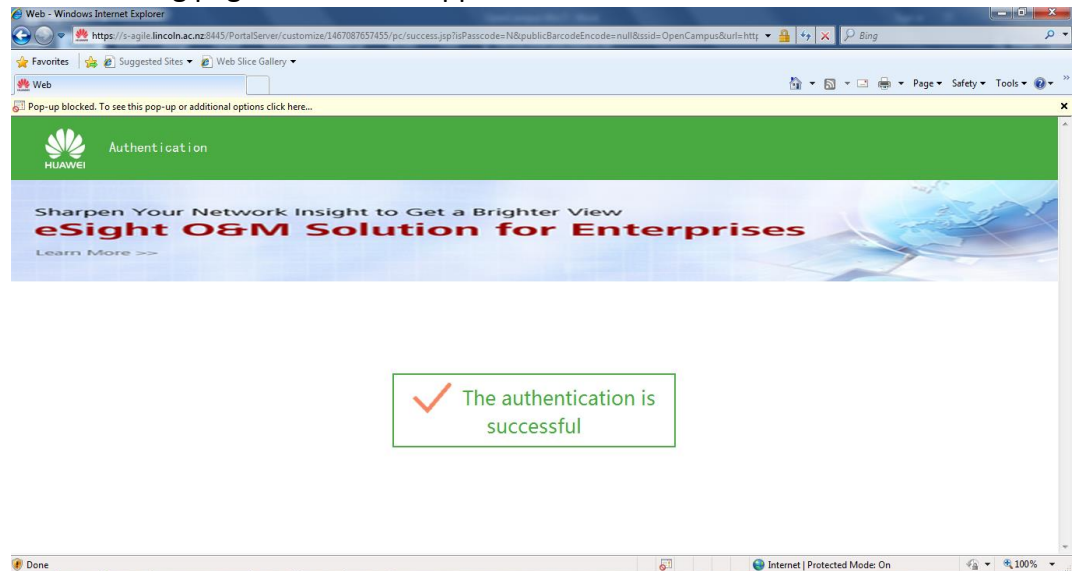
Mobile phone number

Password

Click ok



The following page should then appear:



**b. To Authenticate using Facebook**

Click on the Facebook Link:

Log in to LU OpenCampus

Mobile phone number

Password

I accept the User Agreement [Click Here](#)

Already got LU credentials??  
Connect to SecureCampus signal instead.

**Lincoln University**  
Te Whare Wānaka o Aoraki  
AOTEAROA - NEW ZEALAND  
New Zealand's specialist land-based university

A webpage should open where you put your Facebook login details, and then click on Log In.

Facebook - Mozilla Firefox

https://www.facebook.com/login.php?skip\_api\_login=1&api\_key=1586291745

Facebook

Log in to use your Facebook account with **AgileAuthenticate**.

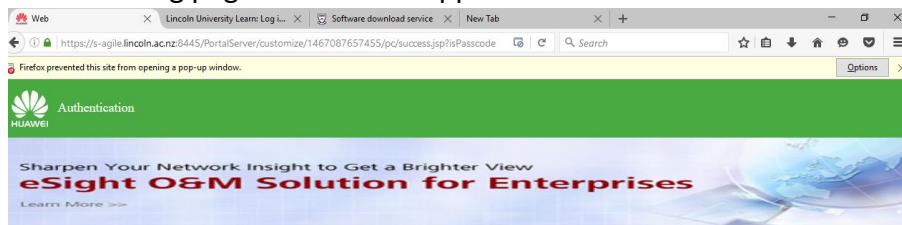
Email or Phone:

Password:

[Forgotten account?](#)

Connecting to fbcdn-sphotos-h-a.aka...

The following page should then appear:



The authentication is successful